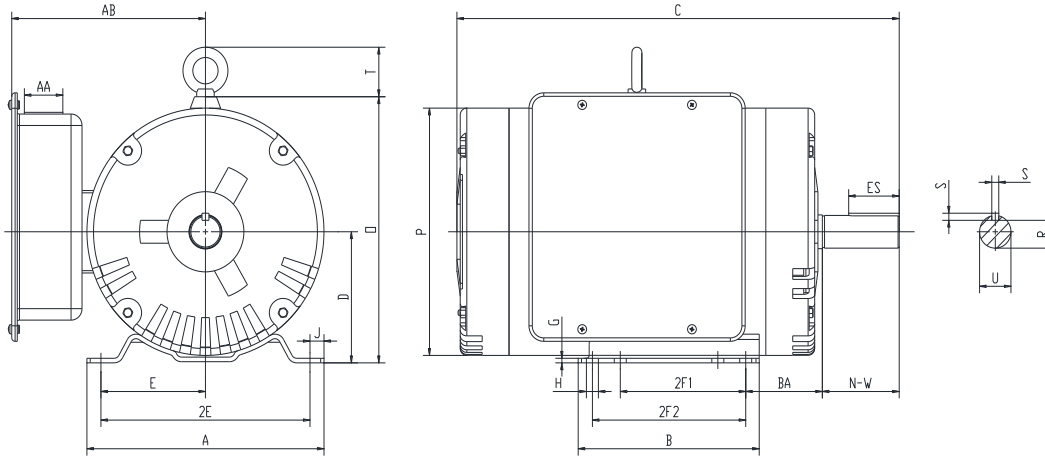




## D182T3S4C

**GENERAL PURPOSE / COMPRESSOR DUTY ELECTRIC MOTOR**  
**SINGLE PHASE - CAPACITOR START / CAPACITOR RUN**  
**HIGH STARTING TORQUE**  
**ROLLED STEEL CONSTRUCTION**  
**OPEN DRIP PROOF**



### DIMENSIONS

HP	RPM	Frame	MOUNTING														
			A	B	C	D	G	H	J	E	2E	2F1	2F2	O	P	T	BA
3	1800	182T	8.5	6.5	15.8	4.5	0.16	0.41	0.5	3.75	7.5	4.5	5.5	9.1	8.5	1.5	2.75

Shaft Extension, Key Set						Conduit Box		Bearings		Mount
U	V	R	S	ES	N-W	AA	AB	DE	ODE	
1.125	NA	0.986	0.25	1.78	2.75	1.1	7	6206-2RZC3	6203-2RZC3	F1

**BEARING LUBRICATION:** The bearings come lubricated with Mobil Polyrex EM Polyurea Grease.





## D182T3S4C


**GENERAL PURPOSE / COMPRESSOR DUTY ELECTRIC MOTOR**  
**SINGLE PHASE - CAPACITOR START / CAPACITOR RUN**  
**HIGH STARTING TORQUE**  
**ROLLED STEEL CONSTRUCTION**  
**OPEN DRIP PROOF**

### PERFORMANCE DATA

HP	RPM	Frame	Voltage	Frequency (Hz)	Full Load S.F.	Insulation Class	NEMA Design	Slip (%)	NEMA Code	Enclosure Type	IP Rating	Max. Ambient
3	1770	182T	208-230	60	1.15	F	L	1.7	G	ODP	23	40 °C

Amps (230V)		Efficiency (%)			Power Factor			Torque (ft-lb)			DE Bearing	ODE Bearing	Connection	Weight (lbs.)
FLA	LRA	100%	75%	50%	100%	75%	50%	FLT	LRT %	BDT %				
11.2	82.5	87.1	84.5	78.3	0.99	0.96	0.87	8.96	280	238	6206-2RZC3	6205-2RZC3	4 Lead	79

### NAME PLATE

		<b>COMPRESSOR DUTY</b> SINGLE PHASE AC ELECTRIC MOTOR HIGH STARTING TORQUE															
CAT NO:	D182T3S4C	FRAME	182T	PH	1	208-230V CCW CW T1 T1 T8 L1 T5 T4 T4 T5 L2 T8											
HZ	60	S.F.	1.15	ENCL	ODP									IP	23		
HP	3	RPM	1770	DUTY	CONT									DES	L		
VOLT	208-230	AMB	40 °C	INS	F												
FLA	12.2-11.2	DE BRG	6206-2RZC3														
CODE	G	P.F.	0.99	ODE BRG	6205-2RZC3												
EFF	87.1	LBS	79														
CONNECTION	4 Lead	SER NO.															
General purpose use on equipment and compressor duty machinery requiring high starting torques where contaminants are minimal.																	
Hernando, Mississippi																	

### APPLICATIONS:

General purpose use on pumps, fans, conveyors, blowers, air compressors, refrigeration equipment, milling machines, tools, farm equipment, aereation equipment and other general purpose applications where contaminants are minimal.